

**STATE OF ARIZONA
SCHOOL FACILITIES BOARD**

Meeting Date: November 2, 2006

Agenda Item VIa.

Subject: VI. Director's Report (action of the Board may be requested)

a. Study Session Results-Campus Layouts

The Board standing policy for inflation adjustments requires staff to limit SFB funding to items required by the minimum guidelines. Staff has requested the Board provide additional guidance in applying the guidelines in a new construction setting for projects that are over the formula budget.

In June 2006, the Board held a study session on the number of buildings that the SFB would fund for new school construction. In October, the Board also review a building shape that could be used to determine exterior lineal feet.

Table 1 shows the number of buildings in the staff recommendation.

Table 1

	0 – 60,000	60,000- 125,000	125,000- 170,000	170,000- 240,000	240,000 +	Total
Recommended	1	2	3	4	5	

Table 2 shows the recommended minimum lineal feet and some sample results from the shape.

Table 2

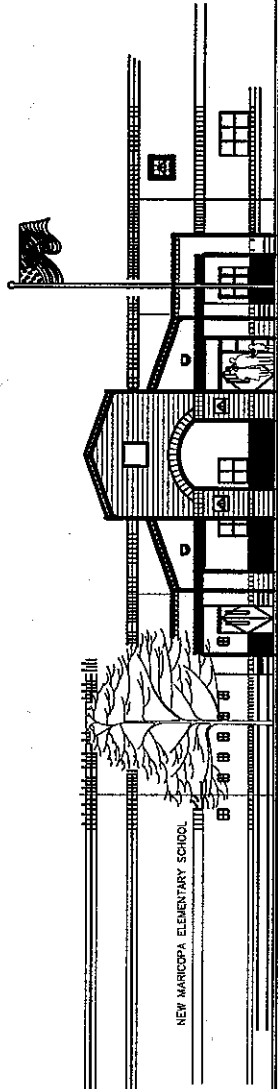
Building Size	Lineal Feet Allowed
Under 60,000 sq. ft.	1,600
67,669 sq. ft.	2,466
73,953 sq. ft.	2,578
101,640 sq. ft.	3,020
134,869 sq. ft.	4,260

Also attached to your packet is a specific comparison of what the shape would produce to several actual projects.

Board Action Requested: information action / described below

That the Board approve the number of buildings and exterior lineal feet guideline as presented.

Attachments: Yes No



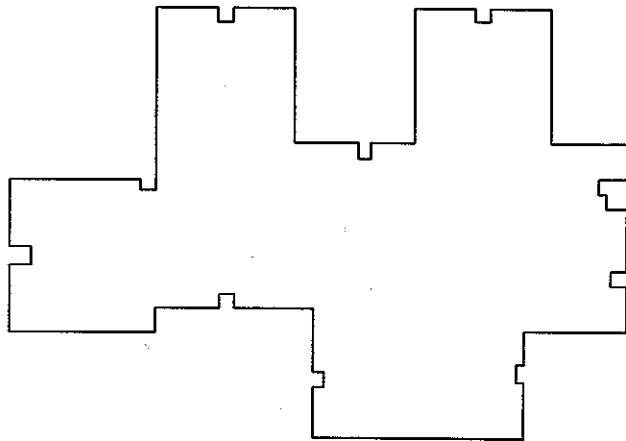
Graphic
CB Architects

SCHOOL DISTRICT		NEW BUILDINGS		CONCEPTUAL SHAPE	
Page No.	School District Name SFB Project number	Number of Buildings & Stories Square Footage Actual Perimeter Footage	SFB Building LayOut & Square Footage Conceptual Square Footage Allowable Perimeter Footage		
1	Maricopa Unified School Dist. # 20 SFB Proj. 11022000-9999-008N K-6, New Maricopa Elem. Sch., CM @ Risk	1 - Building Design, 1 - Story 40,567 sf. 1,584 ft. Perimeter Length	1 - Building Up to 60,000 sf. 40,567 sf. 1,348 Ln. Ft.		
2	Saddle Mountain Unified School Dist. # 90 SFB Proj. 070390000-9999-001N K-8, New Winter's Well Elem. Sch., CM @ Risk	1 - Building Design, 1 - Story 47,434 sf. 1,670 ft. perimeter length	1 - Building Up to 60,000 sf. 47,434 sf. 1,460 ft. perimeter length		
3	Sunnyside Unified Sch. Dist. # 12 SFB Proj. 100212000-9999-002N 6-8, New Sunnyside Middle Sch., CM @ Risk	1 - Building Design, 1 - Story 67,669 sf. 1,363 ft. perimeter length	2, Buildings Up to 125,000 sf. 33,834.5sf (2) = 67,666 sf 2,466 ft. perimeter length		
4	Florence Unified Sch. Dist. # 01 SFB Proj. 110201000-9999-007N K-8, New Anthem Elem. Sch., CM @ Risk	1 - Building Design, 1 - Story 101,640 sf. 2,151 ft. perimeter length	2, Buildings Up to 125,000 sf. 101,640 sf. 3,020 ft. perimeter length		
5	Coolidge Unified Sch. Dist. # 21 SFB Proj. 110221000-9999-012N K-8, New Coolidge Elem. Sch., CM @ Risk	2 - Buildings Design, 1 - Story 73,953 sf. 1,950 ft. perimeter length	2, Buildings Up to 125,000 sf. 73,968 sf. 2,578 ft perimeter length		
6	Dysart Unified Sch. Dist. # 86 SFB Proj. 070289000-9999-013N K-8, New Dysart Elem. Sch., CM @ Risk	2 - Buildings design, 2 - Stories 101,640 sf. 2,995 ft. perimeter length	2, Buildings Up to 125,000 sf. 101,639 sf. 3,020 ft. perimeter length		
7	Coolidge Unified Sch. Dist. # 21 SFB Proj. 110221000-9999-006N 9-12, New Coolidge High Sch., CM @ Risk	3 - Buildings Design, 1 - Story 134,869 sf. 3,058 ft. perimeter length	3, Buildings Up to 170,000 sf. 134,872 sf. 4,260 ft. perimeter length		

1, Buildings
up to 60,000 sf

SFB 1 - Building LayOut

1



1 - Bld'g LayOut
1 - Story
40,567 sf
1,348 perimeter lf

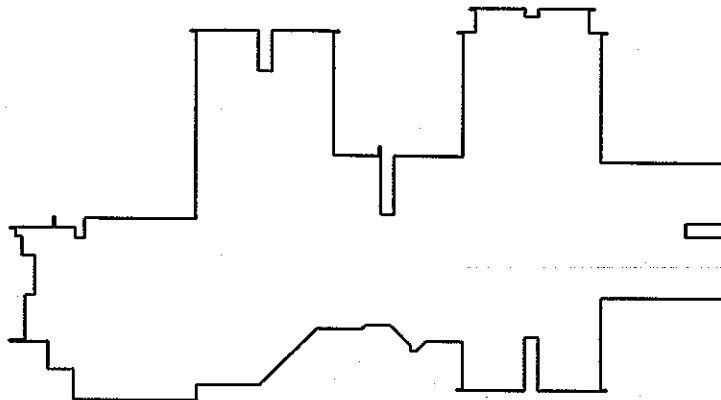
1 - Design Building LayOut

1 - Story; K-6

Maricopa USD

SFB # 110220000-9999-008N-CM

GB, Architects

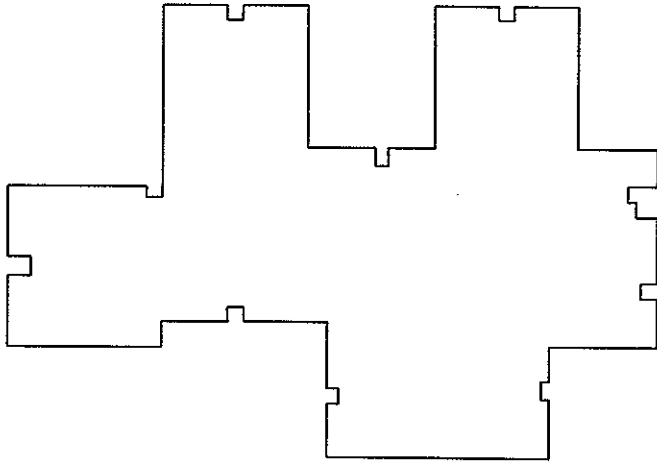


1 - Bld'gs LayOut
1 - Story; K-6
40,567 sf
1,584 perimeter lf

1, Buildings
up to 60,000 sf

2

SFB 1 - Building LayOut



1 - Bld'g LayOut
1 - Story
47,434 sf
1,460 perimeter lf

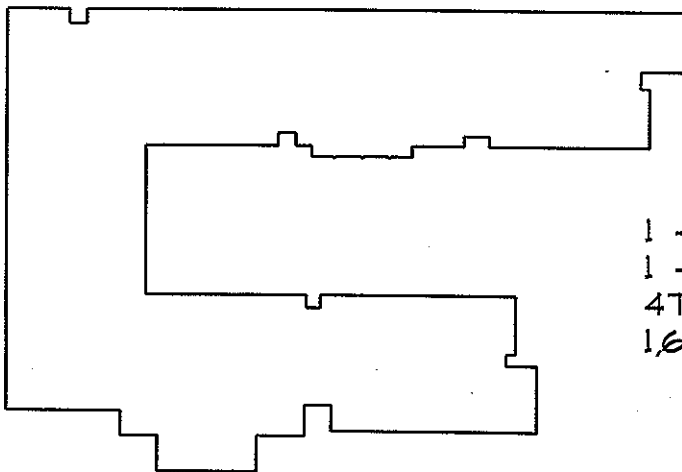
1 - Design Building LayOut

1 - Story; K-8

Saddle Mountain USD

SFB # 070390000-9999-001N-CM

DLR, Architects

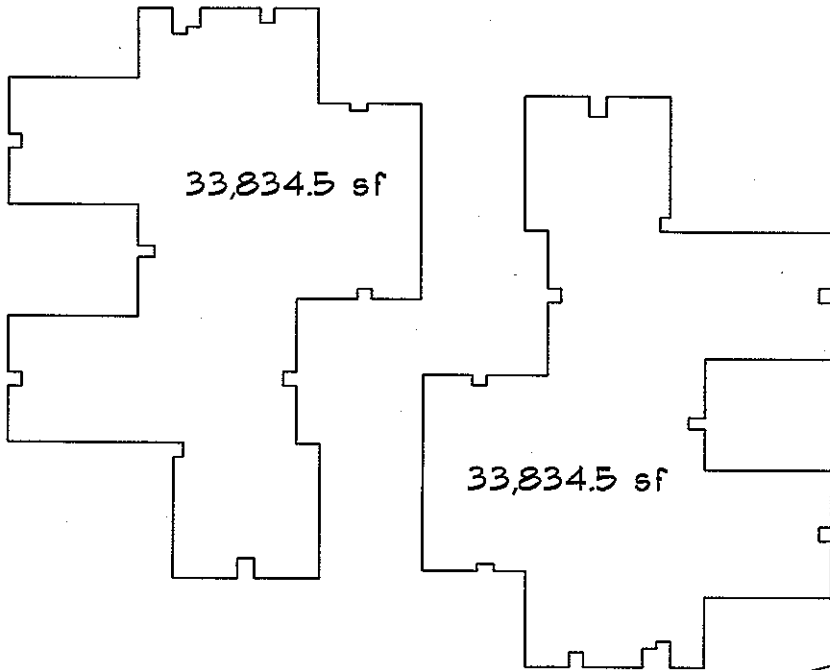


1 - Bld'gs LayOut
1 - Story; 6-8
47,434 sf
1,670 perimeter lf

1-2, Buildings
up to 125,000 sf

3

SFB 2 - Building LayOut



2 - Bld'g LayOut
1 - Story
33,834.5 sf (2) = 67,669 sf
2,466 perimeter lf

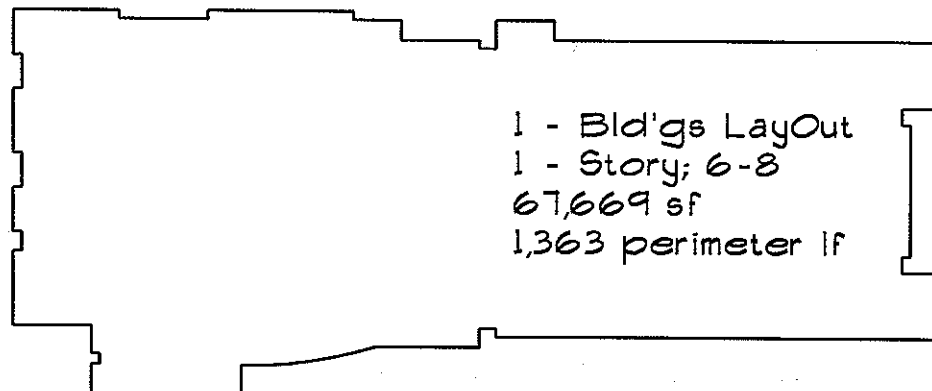
1 - Design Building LayOut

1 - Story; 6-8

Sunnyside USD

SFB # 100212000-9999-002N-CM

3M2C Architects

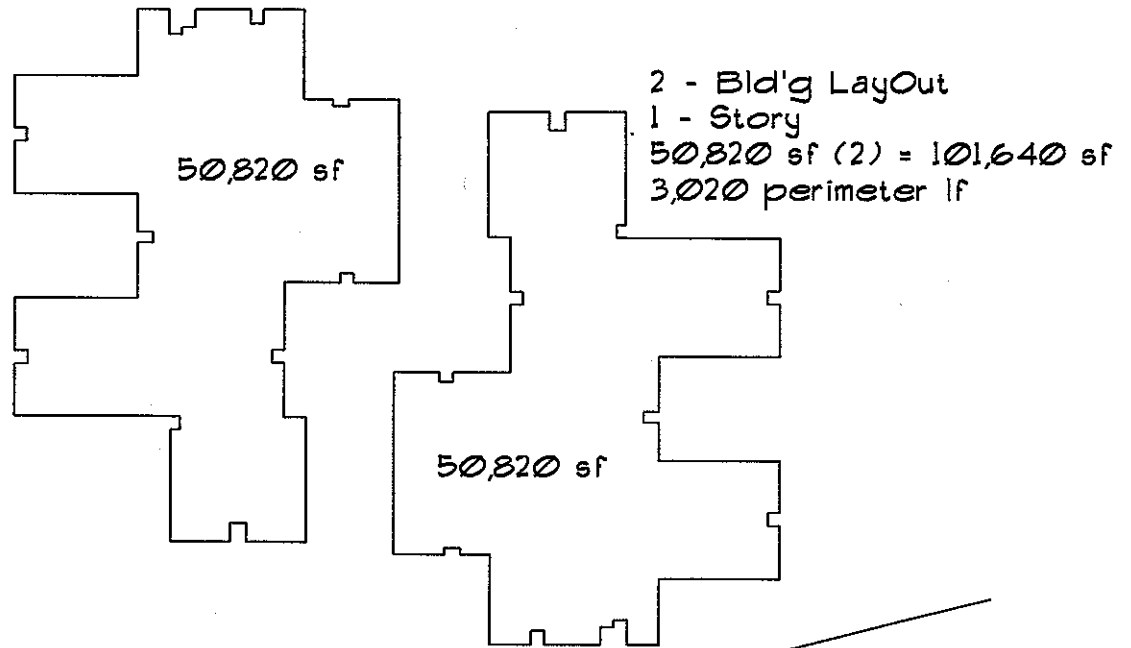


1 - Bld'gs LayOut
1 - Story; 6-8
67,669 sf
1,363 perimeter lf

1-2, Buildings
up to 125,000 sf

SFB 2 - Building LayOut

4



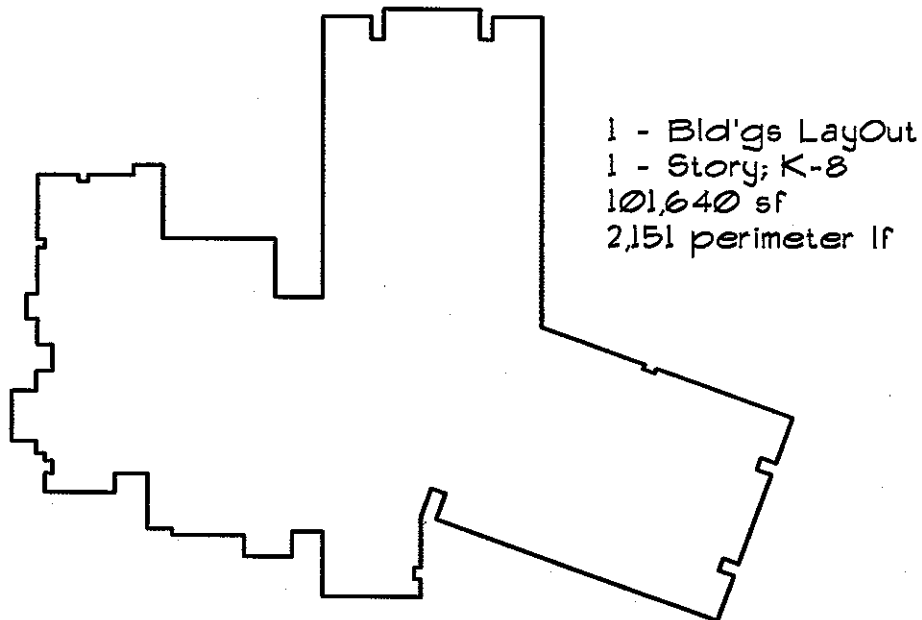
1 - Design Building LayOut

1 - Story; K-8

Florence USD

SFB # 110201000-9999-007N-CM

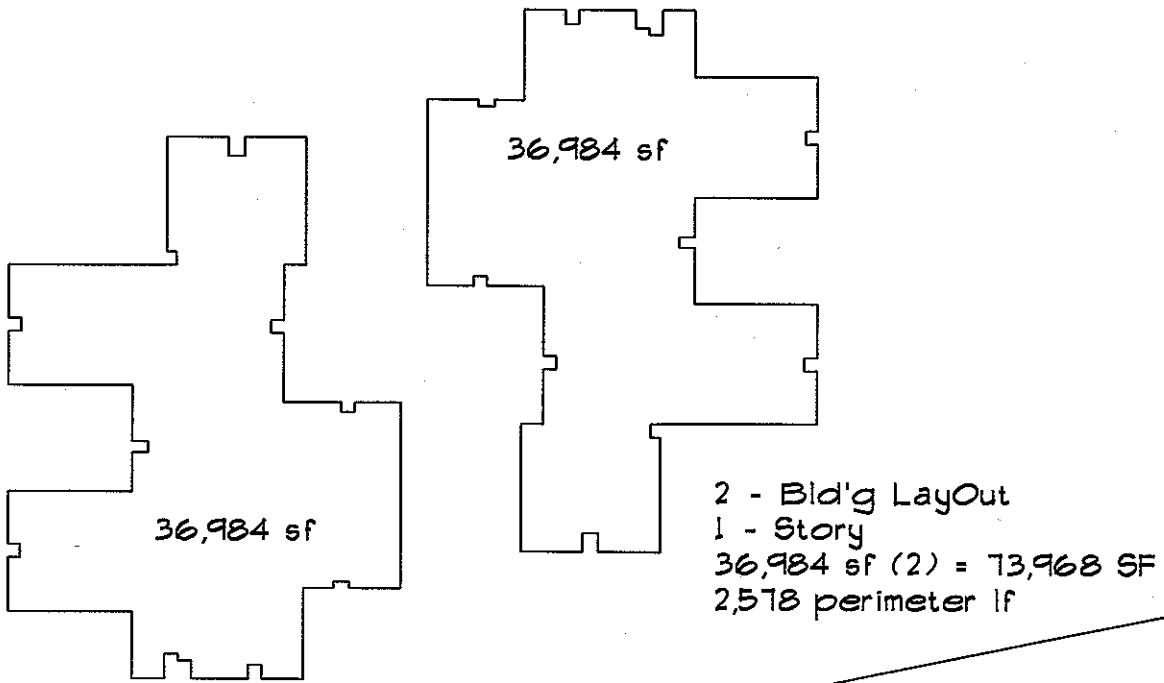
3M2C Architects



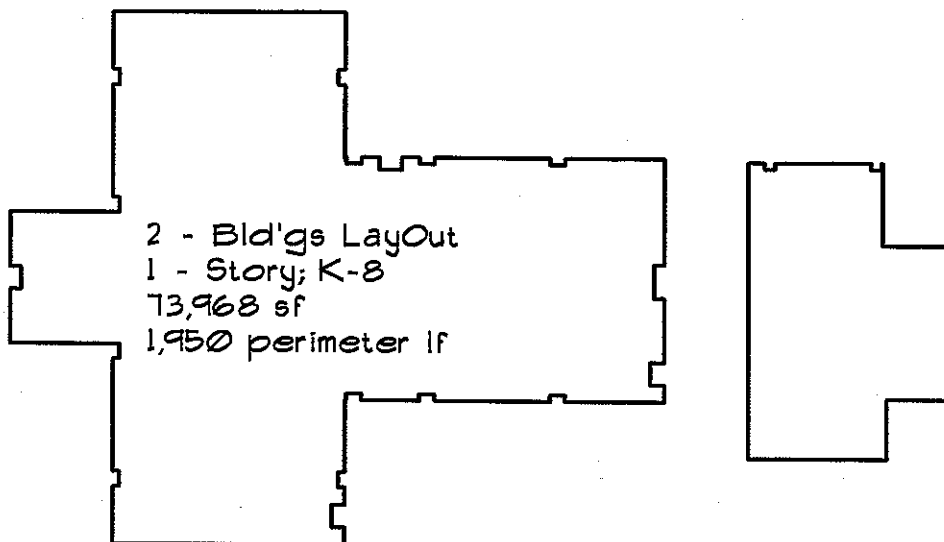
1-2, Buildings
up to 125,000 sf

SFB 2 - Building LayOut

5

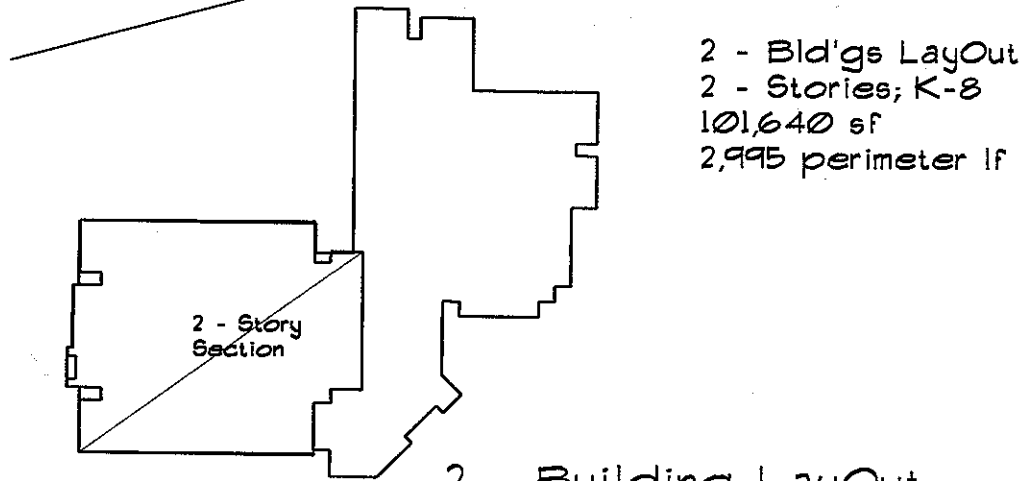
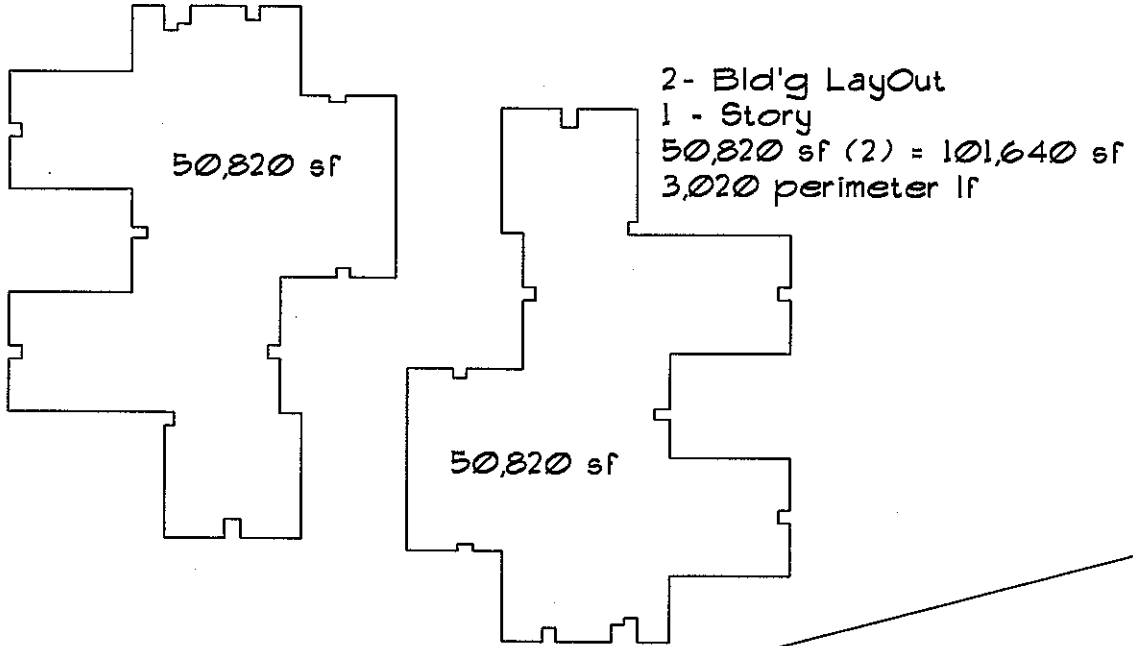


2 - Design Building LayOut
1 - Story; K-8
Coolidge USD
SFB # 110221000-9999-012N
HDA, Architects



1-2, Buildings
up to 125,000 sf

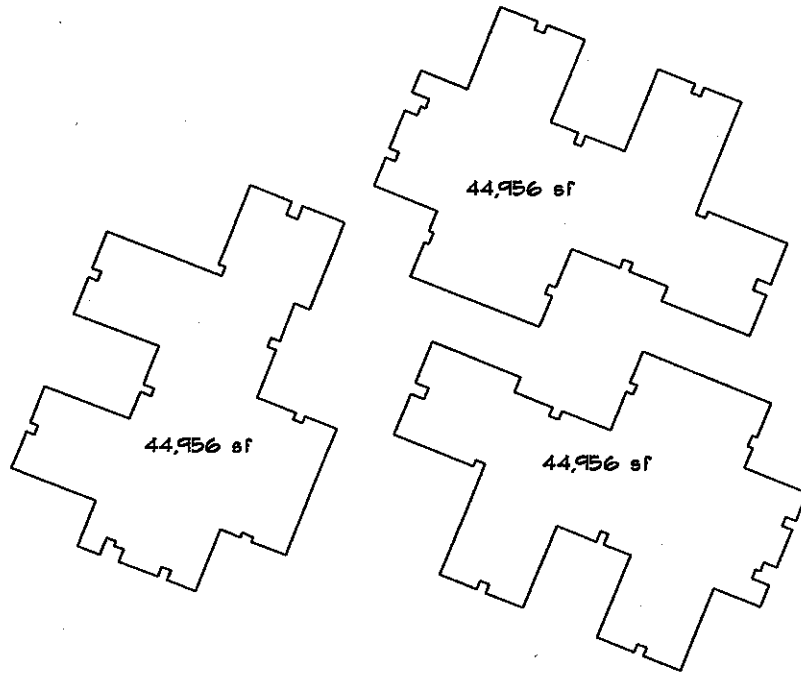
SFB 2 - Building LayOut



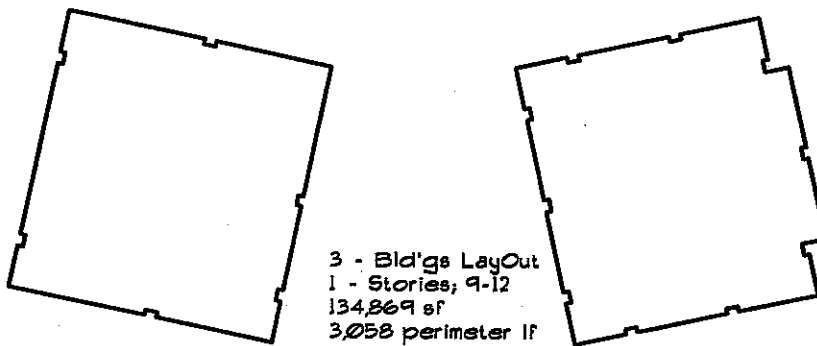
2 - Building LayOut
2 - Stories; K-8
Dysart ESD
SFB # 070289000-9999-013N
GB, Architects

1-3, Buildings
up to 170,000 sf

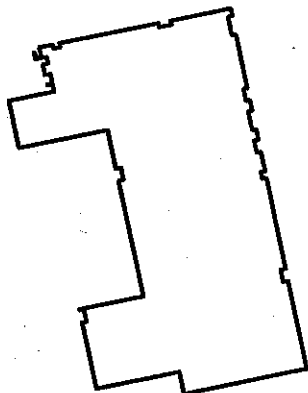
SFB 3 - Building LayOut



3 - Bld'g LayOut
1 - Story
44,956 SF (3) = 134,868 sf
4,260 perimeter lf



3 - Bld'gs LayOut
1 - Stories; 9-12
134,869 sf
3,058 perimeter lf



3- Design Building LayOut
1 - Stories; 9-12
Coolidge USD
SFB # 110221000-9999-006N
HDA, Architects